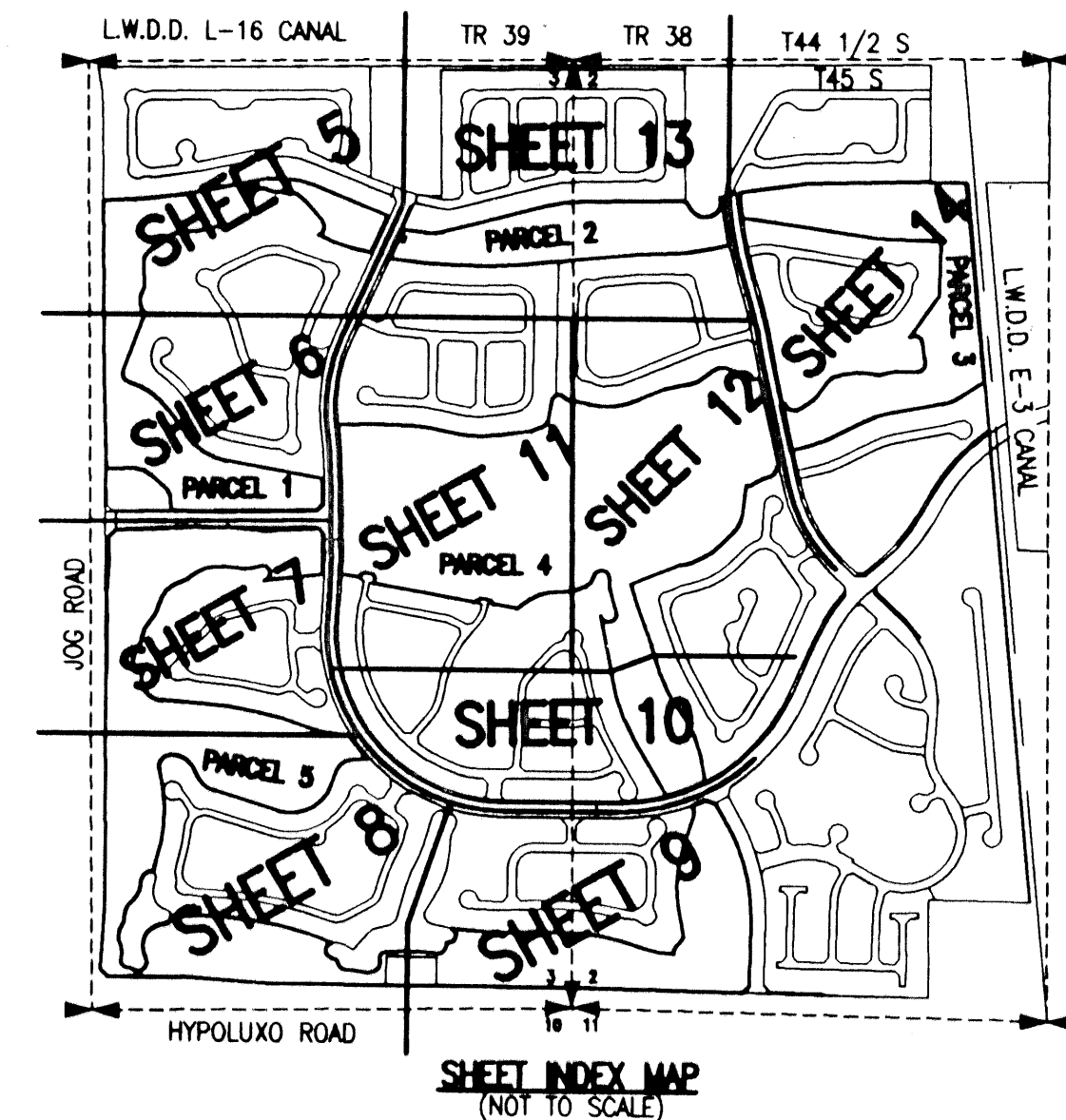


WINSTON TRAILS GOLF COURSE

PART OF WINSTON TRAILS P.U.D.
SITUATE IN SECTIONS 2 AND 3, TOWNSHIP 45 SOUTH, RANGE 42 EAST
PALM BEACH COUNTY, FLORIDA
TOGETHER WITH A REPLAT OF PARCEL 'G',
WINSTON TRAILS PLAT ONE, PLAT BOOK 71, PAGES 28-32
NOVEMBER, 2000



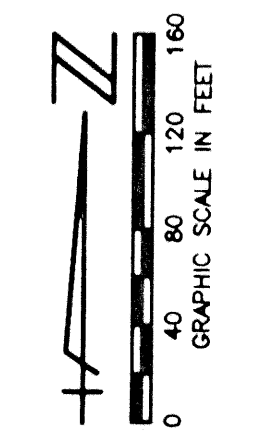
78

STATE OF FLORIDA
COUNTY OF PALM BEACH

THIS PLAT WAS FILED FOR RECORD
THIS _____ DAY OF _____
AD, 2001 AND DULY RECORDED
IN PLAT BOOK _____ ON PAGES _____
AND _____

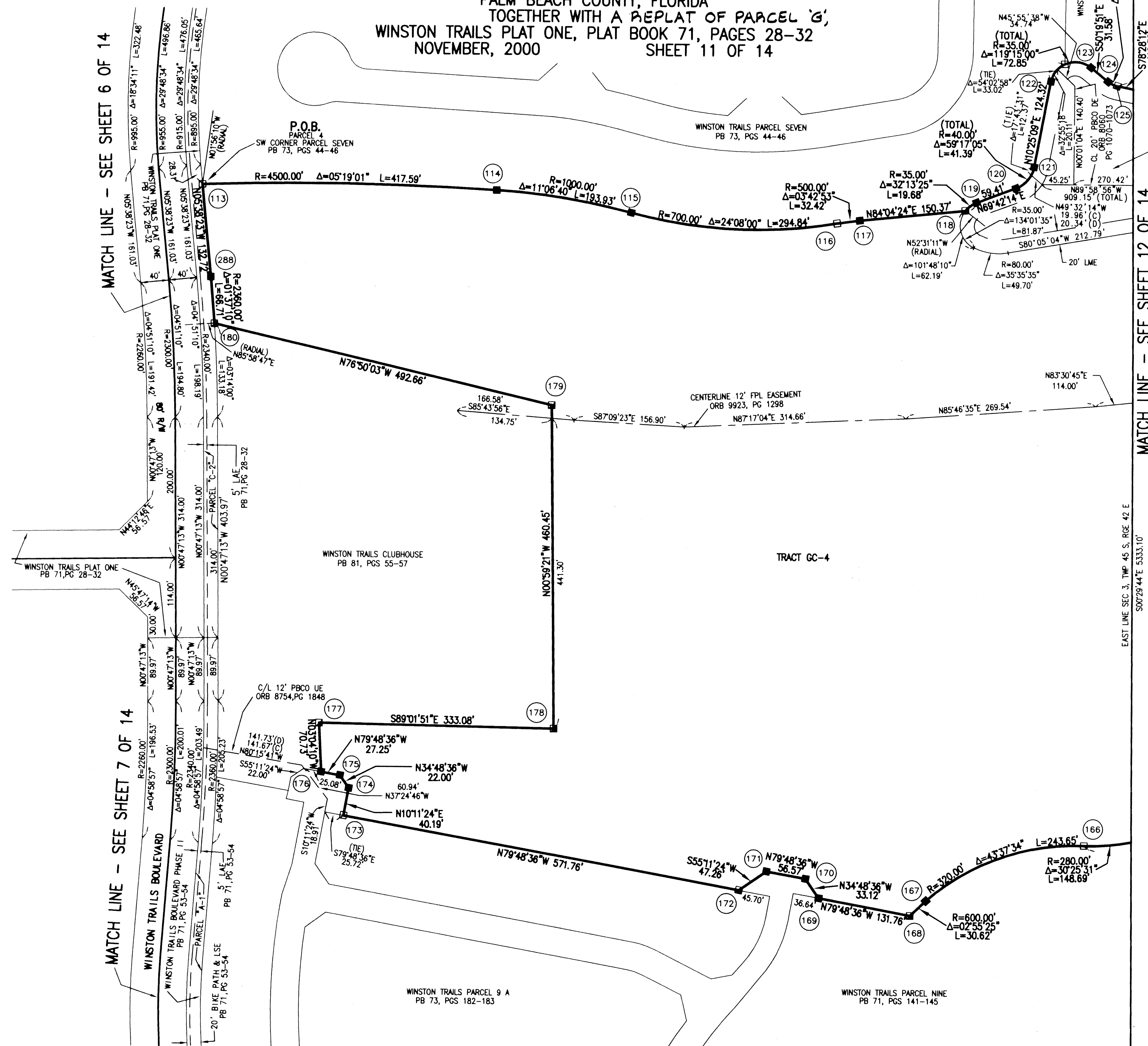
DOROTHY H. WILKEN, CLERK
BY: _____, D.C.

CIRCUIT COURT SEAL



MATCH LINE - SEE SHEET 6 OF 14

MATCH LINE - SEE SHEET 12 OF 14



MONUMENT NUMBER	NORTHING	EASTING
113	817957.4665	936647.1094
114	817952.2623	937064.5216
115	817922.2123	937255.7973
116	817909.8685	937548.2064
117	817914.2627	937580.3185
118	817929.8102	937729.8826
119	817941.3422	937745.5132
120	817961.9577	937801.2337
121	817992.2439	937826.6950
122	818114.5171	937849.1609
123	818135.1364	937905.9233
124	818114.9796	937930.2357
125	818108.6791	937943.3907
166	817026.0403	937908.4308
167	816945.2734	937684.7554
168	816924.3453	937662.4138
169	816947.6372	937532.7288
170	816974.8277	937513.8182
171	816984.8279	937458.1391
172	816957.8437	937419.3401
173	817058.9167	936856.5846
174	817098.4737	936863.6892
175	817116.5351	936851.1278
176	817121.3518	936824.3088
177	817191.9764	936820.5118
178	817186.3860	937153.5406
179	817646.7739	937145.5261
180	817758.9205	936665.7968
288	817825.3859	936660.1711

- LEGEND:**
- LWDD LAKE WORTH DRAINAGE DISTRICT
 - BE BUFFER EASEMENT
 - PBCO PALM BEACH COUNTY
 - R/W RIGHT-OF-WAY
 - PB PLAT BOOK
 - PG(S) PAGE(S)
 - SEC SECTION
 - TWP TOWNSHIP
 - RGE RANGE
 - CL, C CENTERLINE
 - FND FOUND
 - R RADIUS
 - Δ CENTRAL ANGLE
 - L ARC LENGTH
 - SB SOUTHERN BELL
 - FPL FLORIDA POWER & LIGHT
 - UE UTILITY EASEMENT
 - DE DRAINAGE EASEMENT
 - EASE EASEMENT
 - ORB OFFICIAL RECORD BOOK
 - LAE LIMITED ACCESS EASEMENT
 - LME LAKE MAINTENANCE EASEMENT
 - LMAE LAKE MAINTENANCE ACCESS EASEMENT
 - (D) DEED
 - (C) CALCULATED
 - PERMANENT REFERENCE MONUMENT (FND.)
4" X 4" CONCRETE #4323
 - PERMANENT REFERENCE MONUMENT (FND.)
4" X 4" CONCRETE #4763
 - PERMANENT REFERENCE MONUMENT (SET)
4" X 4" CONCRETE LB 048
 - PERMANENT REFERENCE MONUMENT NUMBER
(SEE COORDINATE TABLE FOR VALUE)

SCALE:
1" = 80'
P.A. NO.:
97018.01
DATE:
NOVEMBER, 2000
DRAWING NO.
45-42-02-75

MOCK • ROOS
ENGINEERS • SURVEYORS • PLANNERS
5720 Corporate Way, West Palm Beach, Florida 33407
(561) 683-3113, fax 478-7248

SHEET 11 OF 14

WINSTON TRAILS GOLF COURSE
PART OF WINSTON TRAILS P.U.D.
SITUATE IN SECTIONS 2 AND 3, TOWNSHIP 45 SOUTH
RANGE 42 EAST
PALM BEACH COUNTY, FLORIDA

REV.: 02-09-01
CAD FILE:
MUSSWTGC.WTGCPR09

WINSTON TRAILS GOLF COURSE
PAGE 78
RECORD MAP # 1768
ZONING: RT-15E
ZFP CODE: 35163
TRAC 90
RECORD ZONE B
PLAT 34
81-118
715236
TRAC 90